

# NOVEMBER 2024 CATALOGUE

Established in 2014



**Canopies | Accessories | Roof Racks | Awnings**

**Rooftop Tents | Cargo Slides | Storage Systems**

**\*Prices are subject to change. E&OE**



# Contents

<b>Introduction - Extreme Testing</b>	
<b>Our factory</b>	<b>1</b>
<b>Shipping &amp; exports</b>	<b>2</b>
<b>Standard canopy features</b>	<b>3</b>
<b>Vehicle models, trim levels, features &amp; close ups</b>	<b>4-6</b>
<b>Trim level comparison table</b>	<b>7</b>
<b>Canopy colour options</b>	<b>8-11</b>
<b>Roof racks &amp; roof accessories</b>	<b>12</b>
<b>Aluminium table</b>	<b>13</b>
<b>Telescopic ammo box/wolf pack slides</b>	<b>14</b>
<b>Loadsliders &amp; accessories</b>	<b>15-18</b>
<b>Window options</b>	<b>19</b>
<b>Lighting options</b>	<b>20</b>
<b>Kitchen/storage units, foam inserts</b>	<b>21-22</b>
<b>Vents, insulation &amp; insulation</b>	<b>23</b>
<b>Pop up tent &amp; canvas tent</b>	<b>24-25</b>
<b>Awnings</b>	<b>26-27</b>
<b>Commercial range</b>	<b>28</b>
<b>Specials &amp; Combo Packages</b>	<b>29-33</b>
<b>How &amp; where to purchase</b>	<b>34</b>



# Extreme Testing

## Extreme testing by one family in 19 countries!

In 2020 Elmar Oostveen and his family embarked on one of the most epic trips we have ever seen. We shipped his canopy and Loadslider as well as 2 x kitchen units, fold up table and an ammo box holder to the Netherlands. In June 2020 Elmar and his family put all of our products through one of the toughest tests. 19 countries later, Elmar and his family arrived home safely, no damage or an issues with our products. Unfortunately their Hilux broke down once, meaning our products outlasted a Toyota Hilux on this trip!

You can see this epic trip by visiting Elmar's Instagram page [@oostveen\\_overland](#).

### 19 Countries Visited

The Netherlands  
Belgium  
France  
Monaco  
Italy

Croatia  
Bosnia and Herzegovina  
Montenegro  
Albania  
Northern Macedonia

Bulgaria  
Greece  
Mexico  
Guatamala  
El Salvador

Honduras  
Nicaragua  
Costa Rica  
Panama





# Factory



**View outside our factory in Wadeville**



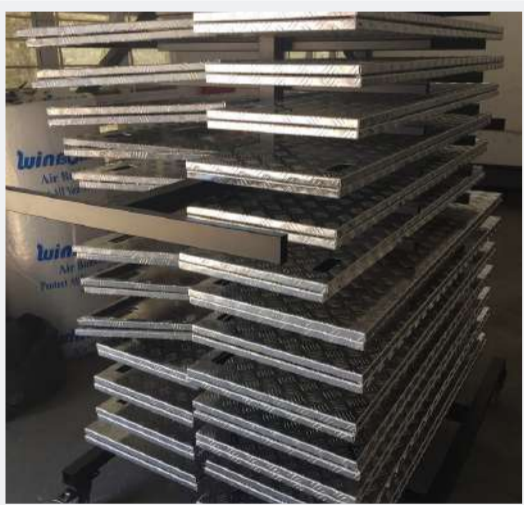
**Precision laser cutting**



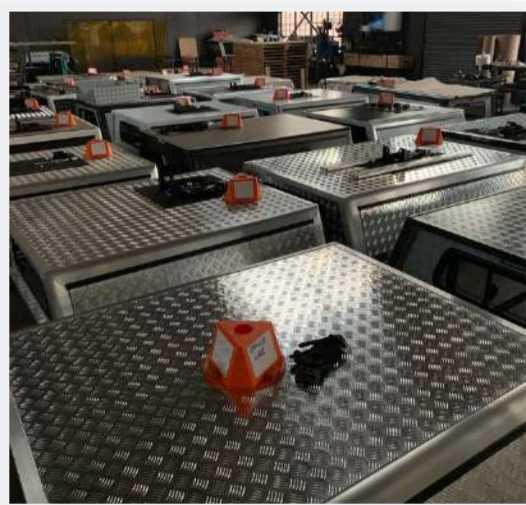
**Suppliers use Trumf and Amada laser cutting machines**



**Trumf and Amada CNC bending machines**



**Doors waiting for powder coating**



**Pre delivery inspection**



**Parts being powder coated**



**Digital measuring systems**



**Water cooled TIG welders allow us to weld at a high current for added strength**



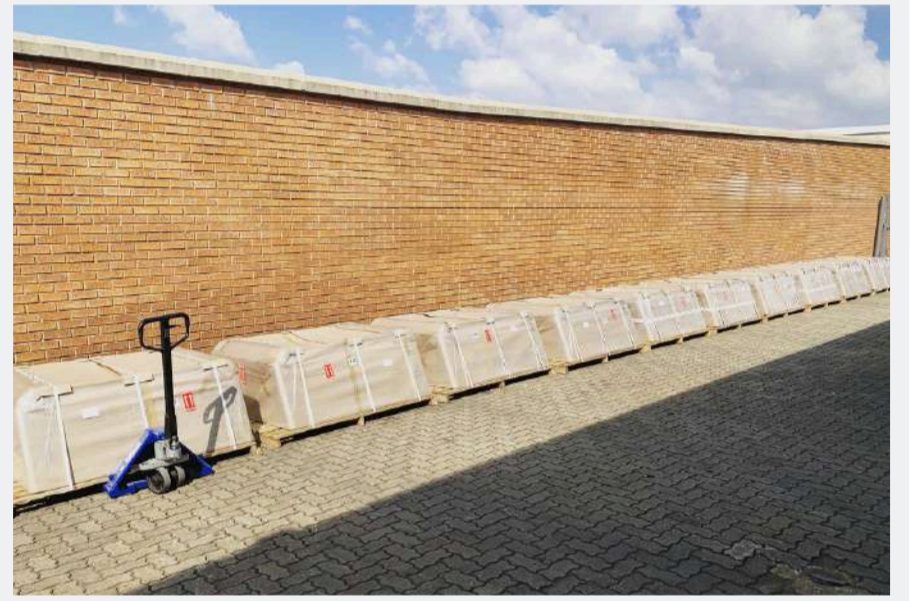
**An example of a strong and visually pleasing aluminium TIG weld**



# Shipping & Exports

## Canopies are shipped worldwide

- Canopies are bolted to a pallet then crated
- Crated canopies can be stored on their side
- Canopies shipped locally can be strapped to a pallet \*on request
- We can arrange shipping using our couriers locally or internationally
- Shipping can also be arranged using our customers/dealers courier locally or internationally
- Small packages are sent locally by courier
- Enclosed crates are available on request
- All canopies and accessories being shipped are tagged with order details and fragile stickers
- Crating allows us to stack three to four canopies high
- Contact us for 20 and 40 foot container export rates





# Standard Features



- ✓ Toughened rear window glass
- ✓ Laser cut aluminium doors
- ✓ Heavy duty locks keyed alike
- ✓ Seamless waterproof door hinges tested to 50000 cycles
- ✓ Rear door grab handle
- ✓ Rear door tapered to match vehicle shape
- ✓ 500 kg rooftop carrying capacity
- ✓ Reinforced aluminium frame 6063 T6 extrusions



**NEW internal slotted roof bars and base extrusion**

- ✓ Fixed glass front window
- ✓ Pressure equaliser vent
- ✓ All doors double lined with automotive rubber
- ✓ Accessoires can be added easily
- ✓ Smooth corners no visible welds
- ✓ Fitted with heavy duty "no drill" brackets
- ✓ Welded rear door supports
- ✓ Double back door seal

\*roof rack & brake light shown is optional



# Vehicle Models

We manufacture canopies & accessories for the following vehicle makes and models;



## Double Cabs

New Gen Ranger

Ford Ranger T6/T7/Wildtrak/Raptor 2012 - 2022

Toyota Hilux 2005-present

Toyota Land Cruiser

Mazda BT-50 2008-present

Isuzu KB & DMAX 2008-present

VW Amarok

Nissan NP300

Nissan Navara D23 and D40

GWM P-Series

Mahindra S10 Karoo

Land Cruiser 79



## Super Cabs

New Gen Ford Ranger

Ford Ranger 2012-present

Mazda BT-50 2012-present

Toyota Hilux 2005-present

Isuzu KB 2013-2022

ISUZU DMAX 2022-present



## Single Cabs

New 2023 Ford Ranger

Ford Ranger 2012-present

Mazda BT-50 2012-present

Toyota Hilux 2016-present

Isuzu KB & DMax 2012-present



# Canopy Trim Levels



## Entry Level

From R24990 for double cabs  
From R26990 for super cabs  
From R31990 for single cabs

Uncoated aluminium frame  
Uncoated tread pattern panels  
Fixed glass windows front & back  
Three pop up doors  
Pressure vent  
Add accessories at any stage

\*Land Cruiser & Mahindra additional R4000



## Mid Range

From R28990 for double cabs  
From R30990 for super cabs  
From R34990 for single cabs

Powder coated aluminium frame;  
White/black/charcoal or silver frame  
Powder coated aluminium panels;  
White/black/charcoal or silver panels  
Fixed glass windows front & back  
Three pop up doors  
Pressure vent  
Roof rails  
Add accessories at any stage

\*Land Cruiser & Mahindra additional R4000



## Pro Series

From R32990 for double cabs  
From R34990 for super cabs  
POA single cabs

All the Mid Range canopy features as well as;  
Rear window security barrier  
LED brake light  
Mounting points for all accessories  
Add accessories at any stage

\*Land Cruiser & Mahindra additional R4000



## Pro Series Ultimate Edition

All the Pro Series canopy features as well as;  
Smooth corners on canopy frame  
3 x LED interior lights  
Heat insulation on the ceiling of the canopy  
Add accessories at any stage

\*Land Cruiser & Mahindra additional R2000

From R35990 for double cabs  
From R37990 for super cabs  
POA for single cabs



# Canopy Trim Levels

## New Gen 2 Canopies From R32990 for double cabs

All the Mid Range canopy features as well as;  
Unique rounded corner frame design  
Rear window security barrier  
Double pressure vents  
Mounting points for all accessories  
Add accessories at any stage

Gen 2 Canopies available for;  
New Gen Ranger Double Cab  
Toyota Hilux GD6 Double Cab  
New Gen Amarok Double Cab  
Ranger T6/T7 2012-2022 Double Cab  
New Gen 7 Isuzu Dmax Ranger Double Cab





# Canopy Features

## Standard features of the GZ Aluminium Canopy:

- 3000kg static load rating officially tested and certified
- Average canopy weight for double cabs +-55kg
- Industry leading 12 year frame warranty & service plan linked to your unique serial number
- Pressure equalizer vent which neutralizes the pressure in the load bin reducing dust intake
- Roof rails fitted with high tensile M8 bolts, allows you to fit tents, roof rack or load bars
- Continuous Centaflex dustproof and waterproof hinges
- Reinforced heavy duty internal slotted roof bars allows you to easy add accessories with no drilling
- Slotted base extrusion which also allows you to easliy add accessories without drilling
- 2 x high quality gas struts per door mounted onto 304 stainless steel brackets for added strength
- Large pressure leaver locks with Neoprene weatherproof & UV resistant seals
- Toughened SABS safety glass front and back, rear window tinted for added security
- Canopy components are easy to repair/replace if damaged
- All of our canopies are easy to fit and remove using basic hand tools
- Add accessories at any stage allowing yopu to build your setup over time or all at once
- Over 30 additional add on accessories that can be fitted without any drilling
- The most feature packed canopy on the market
- Easily add a roof rack or load bars to allowing you to carry cargo/tents/ladders etc
- All products and accessories are tested by ourselves and some select customers. We have one customer in Europe testing our products through over 19 countries & 3 continents with no issues
- We offer advice on canopy options and accessory choices for commercial, leisure and overlanding
- Over 10 years of product design and testing

## Mid Range Canopy Additional Features:

- Frame colour choice black/white/charcoal/silver (colour matching optional)
- Doors & roof colour choice black/white/charcoal/silver

## Pro Series Canopy Additional Features:

- LED brake light with wiring harness
- Internal magnetic battery operated switch light
- Rear window security barrier
- Frame colour choice black/white/charcoal/silver (colour matching optional)
- Doors & roof colour choice black/white/charcoal/silver

## Ultimate Edition Canopy Additional Features:

- Internal heat insulation fitted to the ceiling of the canopy
- 3 x wired LED lights white & amber
- LED brake light with wiring harness
- Frame colour choice black/white/charcoal/silver (colour matching optional)
- Doors & roof colour choice black/white/charcoal/silver



# Close up Pictures

Below are some close up pictures of our Mid Range canopy.

Pictures don't do our products justice but we have tried to show how are products as extremely well made with a large amount of time put into attention to detail.

Our canopies look great inside and out.





# Canopy Comparison

	Entry Level	Entry Level Plus	Mid Range	Pro Series	Pro Series Ultimate Edition
Aluminium frame	Standard	Standard	Standard	Standard	Standard
Aluminium doors & roof	Standard	Standard	Standard	Standard	Standard
Frame warranty	12 years	12 years	12 years	12 years	12 years
Component warranty	2 years	2 years	2 years	2 years	2 years
Fixed glass windows front & back	Standard	Standard	Standard	Standard	Standard
Rear tinted window	Standard	Standard	Standard	Standard	Standard
Pressure equaliser vent	Standard	Standard	Standard	Standard	Standard
Seamless waterproof hinges	Standard	Standard	Standard	Standard	Standard
Three pop up doors gas assisted*	Standard	Standard	Standard	Standard	Standard
Six heavy duty locks keyed alike	Standard	Standard	Standard	Standard	Standard
Polished mill finish aluminium frame	Standard	N/A	N/A	N/A	N/A
Powder coated frame in your choice of colour	N/A	Standard	Standard	Standard	Standard
Uncoated tread pattern doors & roof	Standard	Standard	N/A	N/A	N/A
Powder coated doors in your choice of colour	N/A	N/A	Standard	Standard	Standard
Choice between smooth or tread doors & roof	Tread only	Tread only	Tread or Smooth	Tread or Smooth	Tread or Smooth
Roof rails (for easy fitment of rooftop accessories)	Standard	Standard	Standard	Standard	Standard
Internal mounting points for accessories	Standard	Standard	Standard	Standard	Standard
LED brake light	Optional	Optional	Optional	Standard	Standard
Smooth corners with no visible welds	Optional	Optional	Standard	Standard	Standard
Internal LED lights	Optional	Optional	Optional	Optional	Standard
Internal heat insulation	Optional	Optional	Optional	Optional	Standard
Ability to add accessories at a later stage	Yes	Yes	Yes	Yes	Yes
Tested & certified static rooftop carrying capacity	3000 kg	3000 kg	3000 kg	3000 kg	3000 kg
Dynamic rooftop carrying capacity (while driving)	500kg	500kg	500kg	500kg	500kg
Easy to fit a roof rack or rooftop tent	Yes	Yes	Yes	Yes	Yes
Rear window security barrier	Optional	Optional	Optional	Standard	Standard

\*specifications apply to all double cab, super cab and single cab canopies  
 \*single cabs have 5 pop up doors where all other canopies have 3 pop up doors

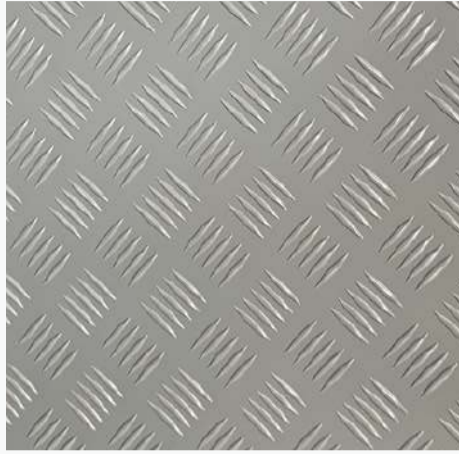


# Colour Options

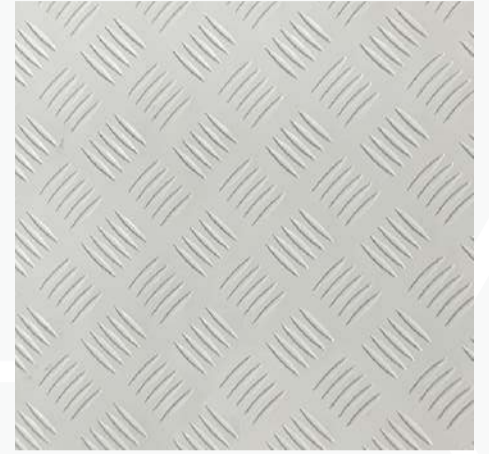
## Tread finish panel colour samples



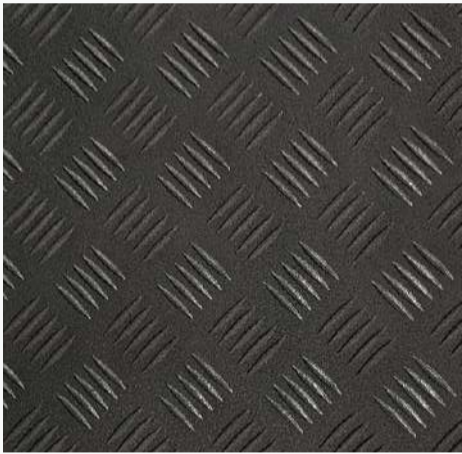
**Black tread**



**Silver tread**



**White tread**

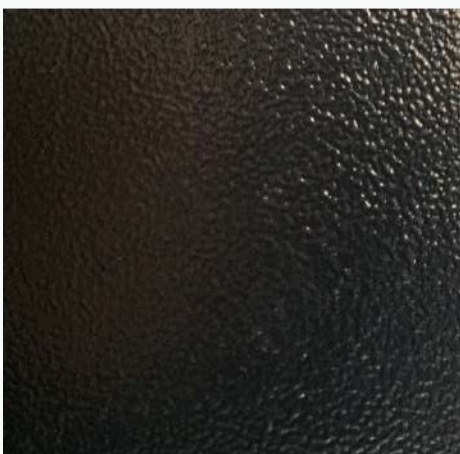


**Charcoal tread**



**Uncoated mill tread**  
**\*Entry & Entry Plus**

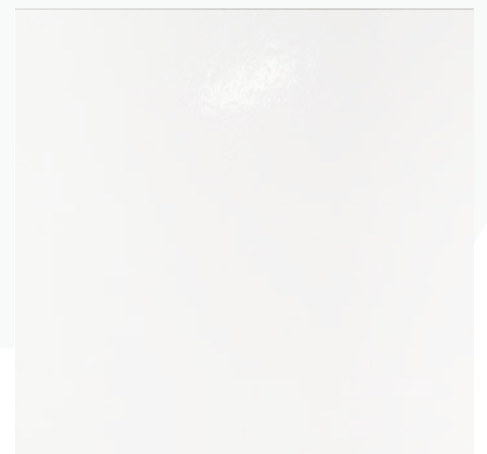
## Smooth finish panel colour samples



**Black smooth**



**Silver smooth**



**White smooth**



**Charcoal smooth**



**Uncoated polished**  
**\*Entry Level frame only**



# Colour Options

## Our Most Popular Colour Options

- White frame with black doors
- White frame with charcoal doors
- All black frame and doors





# Colour Options

## Our Most Popular Colour Options

- White frame with black doors
- White frame with charcoal doors
- All black frame and doors





# Colour Matching

Colour matching available on all canopy frames

R4600 for double cabs

R5600 for super cabs, Mahindra double cab & Land Cruiser double cab

POA for single cabs

\*VIN number required when ordering

\*Any trim level can have their frame painted





# Roof Racks

## Load Bars

includes 6 x eye hooks

**R3200 for double cabs**

**R3400 for super cabs**

**R4600 for single cabs\***

\*single cab uses three load bars



Slat Rack roof rack - 5 x T-Slot slats with 100mm perimeter frame

**R4900 for double cabs**

**R6900 for super cabs**

**NEW**

Light duty fully adjustable load bars

**R1290 for double cabs**

**R1290 for super cabs**

**R1290 for single cabs**



**NEW**

Speed Rack - Modular Quick & Easy To Use Roof Rack

Quick & easy fitment of rack accessories

All aluminium construction

No wind deflector needed

Strong, lightweight and versatile

"Quick Fit" T-Bolt Technology

Includes 6 x eye hooks



**R6900 for double cab racks 1515mmx1265mm**

**R7900 for super cab racks 1723mmx1265mm**

**R9900 for single cab racks 2139mmx1265mm**

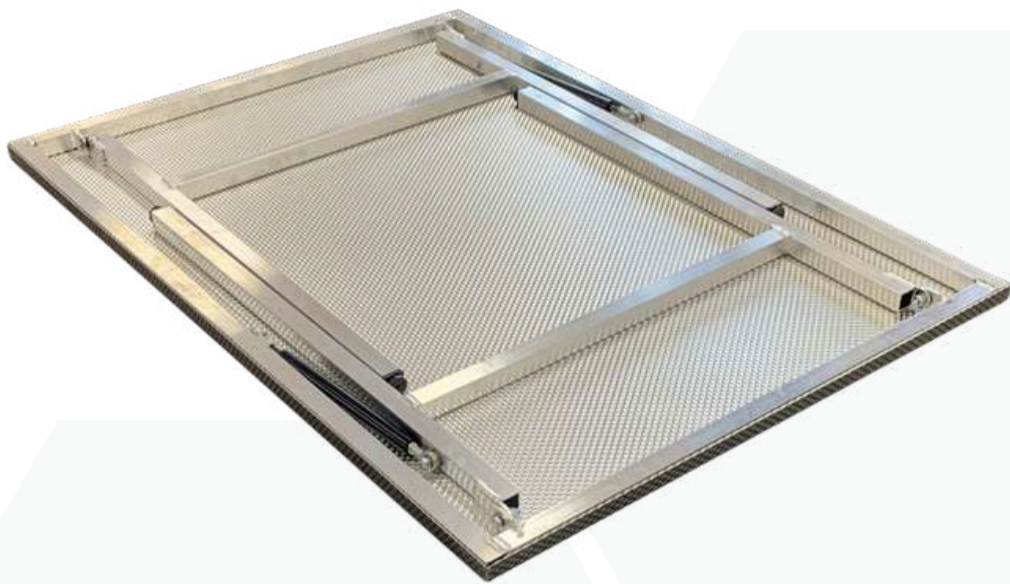


# Aluminium Table

**R4200**

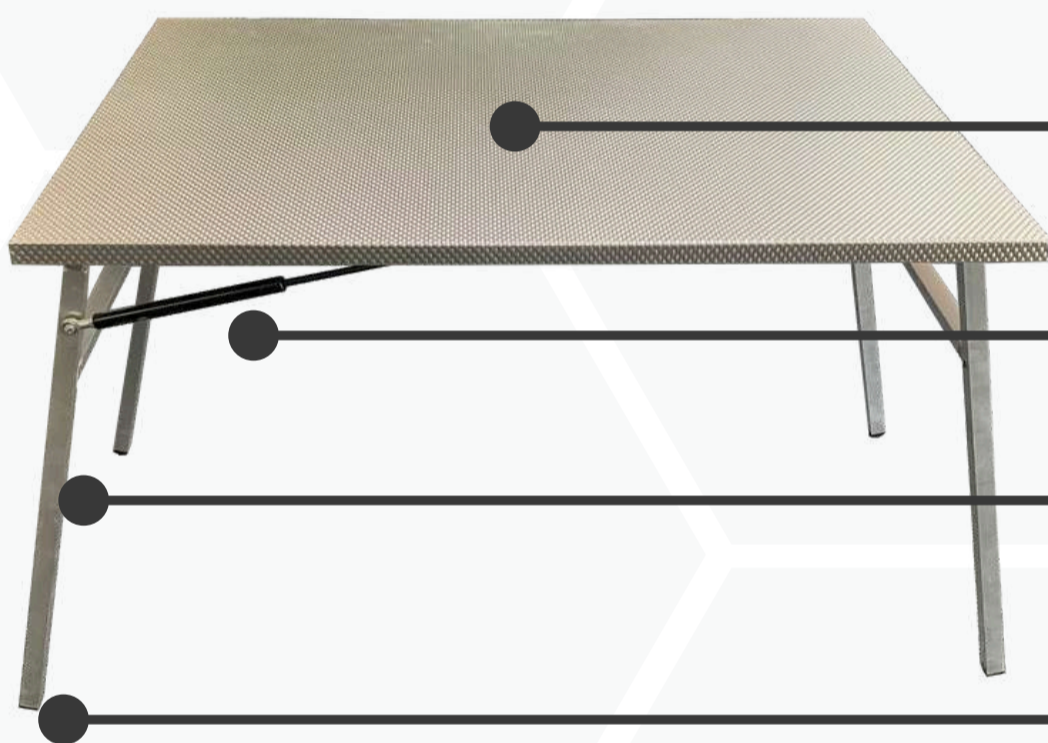
**\*including table slide**

*One of the most popular accessories we sell. Perfect for any occasion.*



Only 32mm thick and 7kg overall weight  
Legs close neatly without any latches or straps

Legs open when table is turned right side up



Rigidized aluminium table top

Gas assisted opening legs

Aluminium legs and framework

Height adjustable feet



New table canvas cover with pouches and storage bag

**R2990**



Completely out of sight and easy to access



# Ammo Box Slides

Telescopic ammo box/crate holder;

**R4600 \*excludes ammo boxes**

- Fits three standard or high top ammo boxes or similar size boxes 505mm wide
- Slides out 1 meter on passenger or drivers side
- Tray and base extrusions made from aluminium
- Angle supports and latches made from 304 stainless steel
- All components powder coated black
- Easy to fit and entire unit is easily removed
- Cut outs for ratchet straps
- Eye hooks supplied if additional straps are required



Typical passenger side setup with slide at full extension



Full setup showing our telescopic ammo box slide, 2 x kitchen units & aluminium table



Rifle Box - attaches to underneath of telescopic ammo box slide  
Extra storage & additional security

**R2990**



Telescopic eye hook angles. Keeps ammo boxes from moving. Quick and easy to strap 3 x boxes

Fixed ammo box/crate holder; **R3600**

- Fits three standard or high top ammo boxes or similar size boxes 505mm wide
- Fixed in place but boxes can slide along the fixed extrusions
- Tray and base extrusions made from aluminium
- Supports and latches made from 304 stainless steel
- All components powder coated black
- Easy to fit and entire unit is easily removed
- 6 x eye hooks included





# The Loadslider

**From R16990 for double cabs  
From R18990 for super cabs**



**Unique "drop & turn"  
T-Bolt Technology**

***Our Loadslider is the ultimate cargo slide for your vehicle  
The most advanced cargo slide on the market***

## **Standard Features**

- 80% extension at 350kg capacity
- 39 stopping positions
- Easy to install and remove
- Works on uneven surfaces
- Various accessories available
- No more climbing into your vehicle load bin to fetch things
- Only 85mm high when installed
- Build in safety features
- Safe & easy to use
- Ergonomic handle & locking mechanism
- There is no other slide like this on the market
- Components are easy to replace
- All aluminium tray with T-Slot extrusions/tracks
- Accessories can be added
- Perfect for leisure, commercial and overlanding
- 6 x eye hooks with t-bolts included



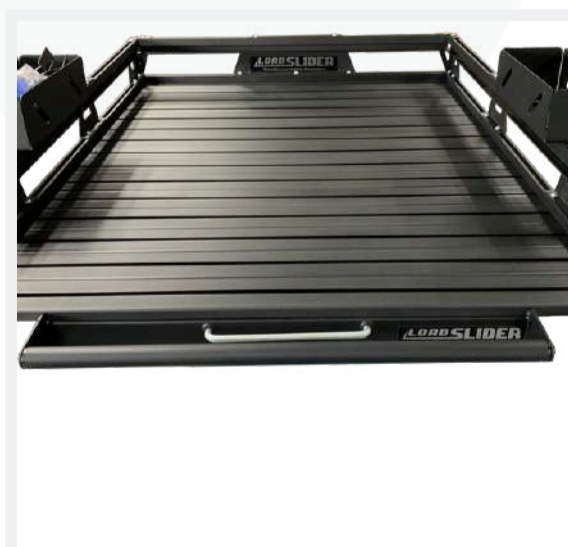
**Low profile design**



**Maximises storage space**



**Easy to fit with multiple  
slotted mounting holes**



**Ergonomic handle  
and locking mechanism**



**Easy access to your entire  
load bin**

**\*Available for most makes of double cabs and super cabs**



# Loadslider Accessories



Standard Loadslider  
without perimeter rail

**From R16990 for double cabs**  
**From R18990 for super cabs**



Loadslider with perimeter rail

**From R18990 for double cabs**  
**From R20990 for super cabs**



Loadslider with perimeter rail & 2 x small bin boxes

**From R20370 for double cabs**  
**From R22370 for super cabs**



Small bin boxes easily bolt  
anywhere on the Loadslider

**R690 each**



Perimeter rail only

**R2000**



Additional eye hooks

**R25 each**



Stretchy Straps

**R250 each**



Corner brackets including 2 x eye hooks

**R140 each**



Divider plate including 2 x eye hooks

**R690 each**



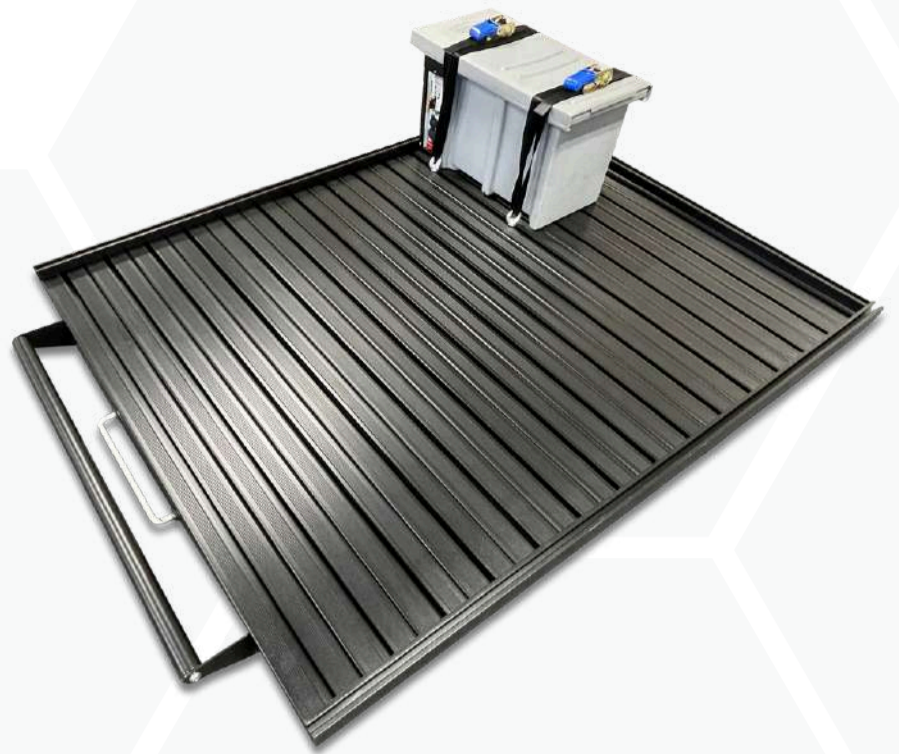
# Loadslider Accessories

NEW PRODUCTS

We have expanded our range of Loadslider Accessories. Listed below are some of the new accessories, with more on the way.



**Medium Fridge Slide R4990 incl.vat**  
**Large Fridge Slide R5990 incl.vat**



**Battery Box Straps R590 incl.vat**  
**Includes 2 x straps & 4 x eye hooks**



**Heavy duty double corner bracket R190 incl.vat**



**50 Litre water tank kit R1990 incl.vat**  
**Includes 2 x straps & 4 x eye hooks**



**Cable protection chain - discontinued**



**Large bin boxes R890 each incl.vat**



# Loadslider Gallery





# Window Options

Various window options available for your canopy

- All glass used is SABS toughened safety glass
- Rear glass windows come standard with a grey tint
- Front glass, front sliding windows & side sliding windows use clear glass
- 4mm thickness used for all glass and windows
- Smash and grab can be fitted by any PG Autoglass Centre



Standard tinted rear glass window



Solid rear door "no window" option  
**no cost option**



Single cab side sliding windows  
**R2600 per pair**



Double cab & super cab side sliding windows  
**R2600 per pair**



Rear window safety mesh  
**R1490**



Front sliding window  
**R1200**

\*all canopies come standard with fixed glass front & rear windows



# Lighting Options

Internal LED light set consisting of three wired 12 volt white/amber lights  
 All three lights are joined to a cigarette lighter socket  
 Vehicle needs to have a dual battery or 12 volt socket prewired to power the lights  
 Wireless on/off switch remote available  
**R2200 for a set of 3 lights installed**



Left hand side door LED light



Right hand side door LED light



Rear door LED light



White light for maximum visibility



Amber light provides less visibility but doesn't attract insects



LED brake light  
 Can be fitted to any canopy trim level  
 Ford approved harness available  
 Toyota approved Hilux Revo harness available

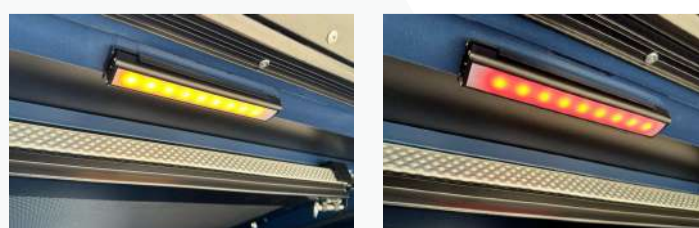
**R660 each**  
**Ranger/Revo wiring harness R890**



USB Rechargeable LED Light

Sticks on a magnetic strip that can be positioned anywhere inside the canopy. Provides adequate light without wiring up your vehicle or using a dual battery

White/Amber/Red  
**R390 each**





# Kitchen Units

We offer a wide range of kitchen/storage units and related accessories

- Kitchen units are made entirely from aluminium
- Easy to fit, each unit bolts in place with 4 x M8 bolts
- Once fitted, these units will not come loose even when travelling on corrugated roads for extended periods
- Each unit is 50% of the length of the side door opening for double cabs and super cabs. For single cabs where double doors are standard, each unit is the width of one side door opening
- All units and accessories can be added to your canopy at a later stage



Powder coated kitchen unit  
**R1800 each**



Powder coated kitchen unit with optional carpeting  
**R2400 each**  
**\*carpeting R600**

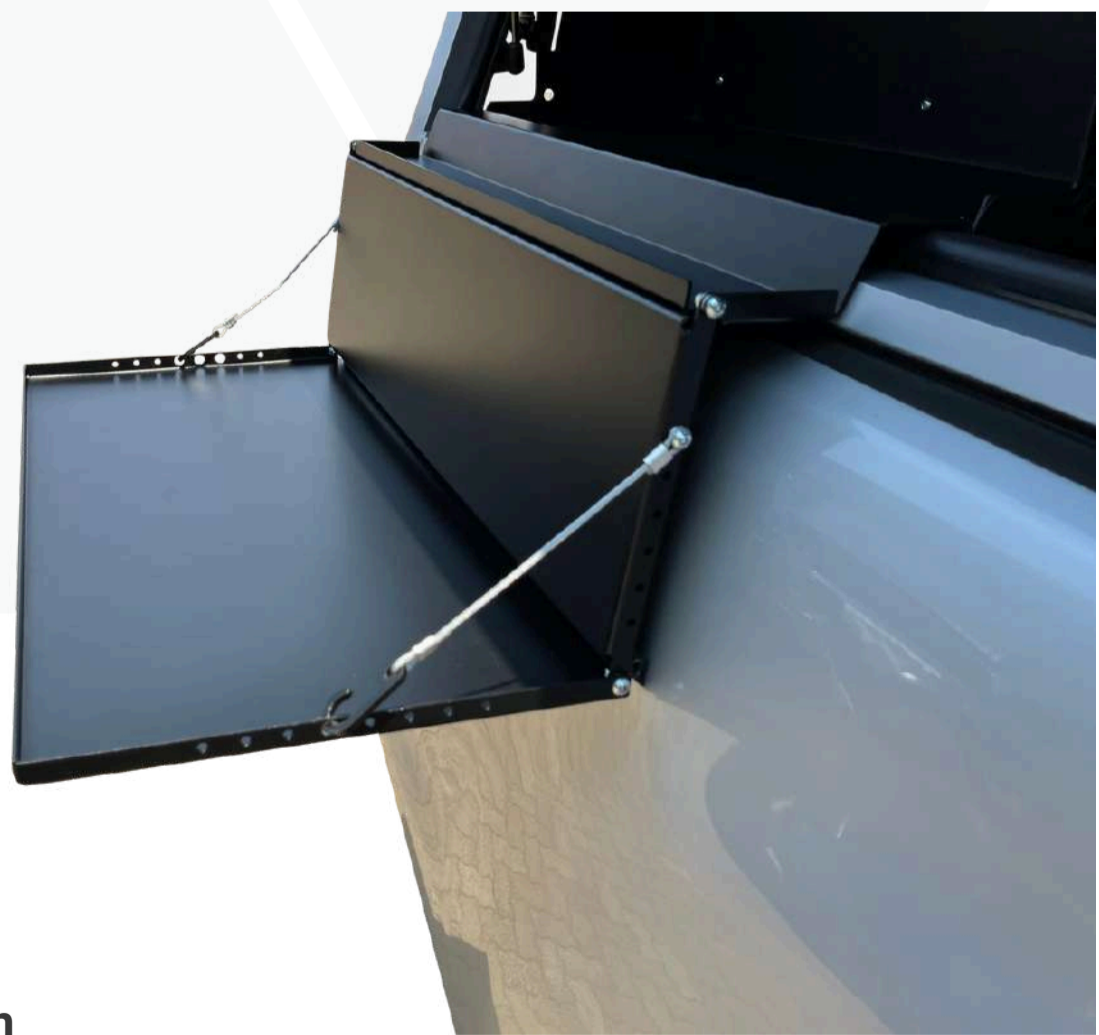


Powder coated kitchen unit with optional fixed shelf & full carpeting  
**R2750 each**



Powder coated kitchen unit shelf  
**\*shelf R250**   **\*shelf carpeting R100**

New drop down aluminium shelf  
Includes storage bag  
Clips onto base of canopy  
**R1800 each**



Kitchen units can be fitted in conjunction with other accessories such as our ammo box slides and aluminium table



# Kitchen Units

## Canvas Cutlery Bag **R2200 each**

- High quality canvas cutlery bags
- Easy to fit and pack into our kitchen units
- Cutlery bag is removable and can be carried to cooking/eating area
- Any cutlery, crockery, cooking utensils and other kitchen related items can be packed
- No restrictions on what items can be packed
- More usable than foam inserts



## Foam Inserts **POA**

- We outsource all of our foam insert work to HD Foam Solutions
- Foam inserts are easy to fit and glue into our kitchen units
- All foam inserts are custom made to your requirements
- Items you require need to be supplied to HD Foam Solutions so they can measure everything up and send you different layouts
- Once you decide on a layout the foam inserts will be cut out and sent either to the customer or to us to install into the kitchen unit





# Vents & Insulation

All canopies come standard with a front mounted pressure vent  
Our pressure vent is suitable for ordinary conditions  
Pop up vents are needed for fine or excessively dusty roads  
Vents should be used in conjunction with a load bin/tail gate dust seal kit



Plain aluminium pop up vent  
**R990 each**



Powder coated aluminium pop up vent  
to match door colour  
**R1200 each**

## Tail gate dust seal kits

\*not compatible with plastic bin liners



Ford Ranger 2012 - 2022  
**R1800 each**



Toyota Hilux GD6 2016 - present  
**R1800 each**

2023 New Gen Ford Ranger  
**R2200 each**



## Heat Insulation

Available for all canopies  
Laser cut from heat insulation foam sheets  
Reduces internal canopy temperature

**R1690 double cab roof insulation**  
**R1890 super cab roof insulation**  
**Single cabs POA**



# Pop up Tent

from R42900  
\*excludes fitment



*\*Optional 270 degree awning*



- Lightweight high quality tent
- Ladder included
- Fits onto 2 or 3 x load bars
- Easily sleeps two people
- Various ways to be fitted to canopy
- Heavy duty zips

[Click here to view all specs & videos on our website](#)



Telescopic ladder included



Carbon fibre panels



Heavy duty handle and locks



Aerodynamic design



# Canvas Rooftop Tent

from R16990  
\*excludes fitment



## 1.4m Canvas Rooftop Tent Specs

- 1.4m x 2.4m
- 280gms ripstop canvas
- Heat vent
- Four windows with rainfly
- Ladder included
- Mattress included
- Fits onto our canopies
- Can be fitted in combination with an awning or a shower cube





# 270 Degree Awning

R15990

\*excludes fitment



- All aluminium construction
- High quality reflective ripstop canvas
- Heavy duty awning bag
- Can be used as a free standing awning
- 1 x drop down leg included
- One person setup
- Sets up in seconds
- Minimal wind noise while travelling
- Fully powder coated matt black

## Ways to fit our awning;

- On our heavy duty roof rack
- Onto other makes of roof racks
- Onto our pop up rooftop tent



Full 270 degree coverage



Optional side wall kit



Easily stores away in seconds



Can also be fitted to a tent



# 2,5m Pull Out Awning

R4900

\*excludes fitment



- All aluminium construction
- High quality canvas
- Heavy duty awning bag
- Two person setup
- No wind noise while travelling
- Lightweight and easy to fit
- Simple and easy setup

## Ways to fit our awning;

- Directly to canopy roof with roof tracks
- Onto a pair of load bars
- On our heavy duty roof rack
- Onto other makes of roof racks
- Onto our pop up rooftop tent





# Commercial Range

We offer a wide range of canopies and accessories for commercial use  
Our all aluminium canopies are lighter and stronger than fibreglass and steel canopies  
Every single cab canopy come standard with five pop up doors for easy access  
Various colour options available  
Easily add load bars, roof racks, contractors racks and other usefull accessories



Five pop up doors for easy access to load bin



Popular all white powder coated canopy



Optional load bars for loading pipes, ladders and other long items



Telescopic slide for access to additional storage as well as rear mounted storage boxes



Contractors roof rack and side sliding windows also available

Contact us for commercial and fleet requirements



# Package Specials

**R34790 for double cabs**  
**R36790 for super cabs**  
**POA for single cabs**

## Weekender Camping Package

- Our first package we offered back in 2017
- Perfect for weekend trips or a great starting point for an overlanding setup
- Additional accessories can be added to this package
- Save R2000 when ordering this package

### This package includes:

- Mid Canopy
- Two kitchen units
- Aluminium table and slide
- Fitment included at our factory



### Mid Range Canopy.

Three pop up doors  
LED brake light + harness  
Roof rails  
Pressure vent  
3 ton capacity  
12 year warranty

Frame colour choices;  
black, white, silver or charcoal

Roof & doors colour choices;  
black, white, silver or charcoal



Two kitchen units  
Easy to fit and remove  
Various accessories available to kit out your kitchen units  
Lightweight, all aluminium



Ceiling mounted aluminium table and table slide  
Fits neatly away in the ceiling of the canopy



# Package Specials

**R40000 for double cabs**  
**R42000 for super cabs**  
**POA for single cabs**

## Pro Series Weekender Camping Package

- Our most popular package we have ever offered
- Perfect for weekend trips or a great starting point for an overlanding setup
- Additional accessories can be added to this package
- Save R2780 when ordering this package

### This package includes:

- Pro Series Canopy
- Two kitchen units
- Aluminium table and slide
- 3 x LED lights wired to a cigarette socket \*wiring of vehicle R890 extra
- Fitment included at our factory



### Pro Series Canopy.

Smooth or tread panels  
Three pop up doors  
LED brake light + harness  
Roof rails  
Pressure vent  
3 ton capacity  
12 year warranty

Frame colour choices;  
black, white, silver or charcoal

Roof & doors colour choices;  
black, white, silver or charcoal



Two kitchen units  
Easy to fit and remove  
Various accessories available to kit out your kitchen units  
Lightweight, all aluminium



3 x white/amber LED lights



Ceiling mounted aluminium table and slide



## Mid Range Canopy + Loadslider Package

- The most advanced and popular cargo slide on the market
- One of best combination of accessories for your bakkie for work, play or commercial
- Easily add any of our accessories to this package, over 30 accessories available
- Save R3000 when ordering this package

### This package includes:

- Mid Range Canopy
- Loadslider
- Free fitment included at our factory





# Package Specials

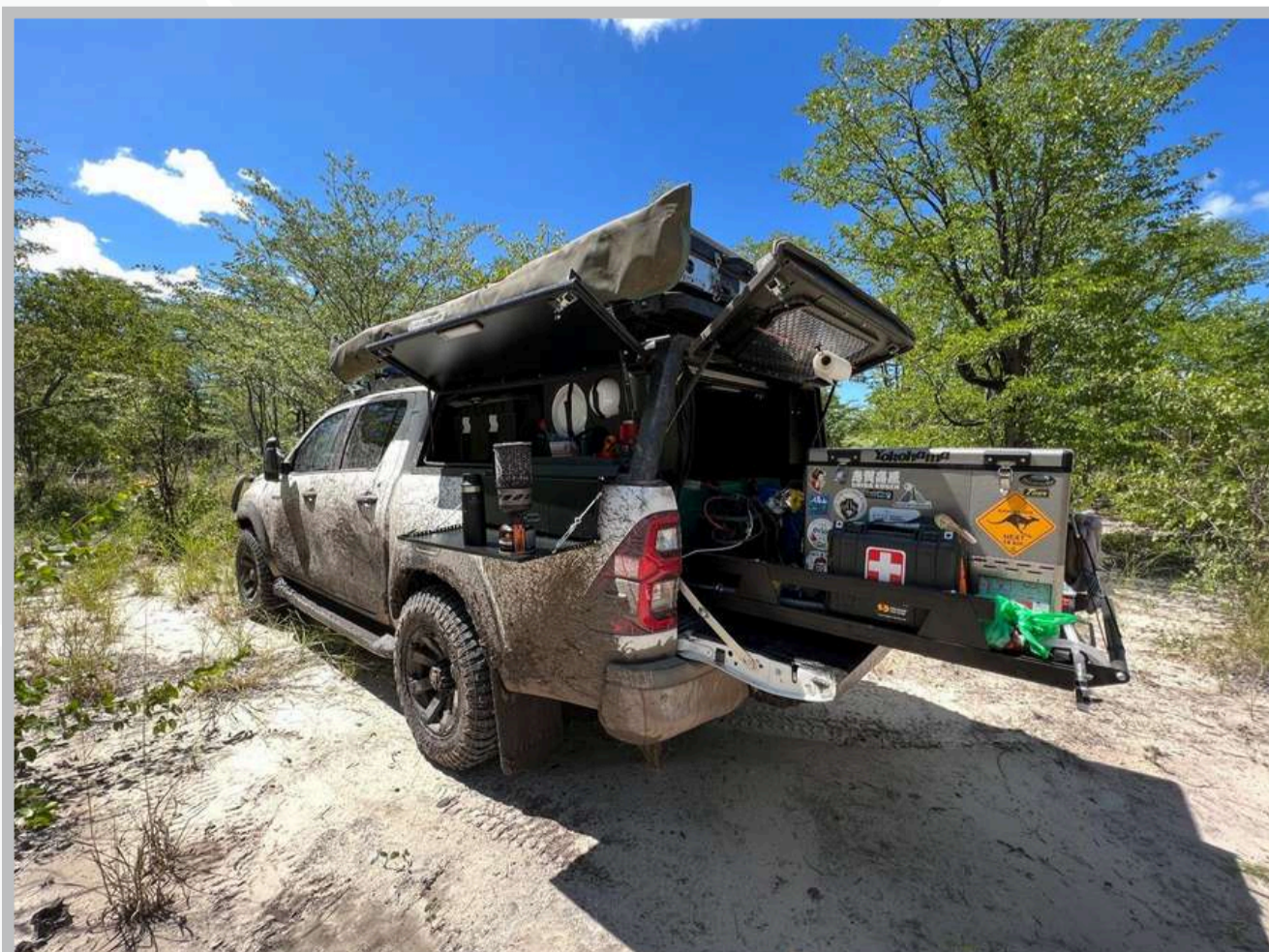
**R69000 for double cabs**  
**R73000 for super cabs**

## Fully Loaded Package

- Fully loaded package ideal for overlanding or long camping trips
- Only extra items need are your choice of tent and awning or a camping trailer
- Save over R4000 with this package

### This package includes:

- Mid Range Canopy
- Loadslider with perimeter rail
- Speed Rack - roof rack
- 3 x internal LED lights
- Rear window security barrier
- Ceiling mounted aluminium table
- Telescopic ammo box slide
- 3 x ammo boxes & stretchy straps
- 2 x kitchen units
- Drop down kitchen unit prep shelf





# Package Specials

R159000 for double cabs

R164000 for super cabs

## Overland Explorer Package

- The most fully loaded overland ready package on the market
- Fully kitted package for overlanding

### This package includes:

- Pro Series Canopy
- Loadslider with perimeter rail
- Two person pop up rooftop tent
- 270 degree awning
- Dual battery wiring
- National Luna DC25 battery box
- Lithium battery
- 150W solar panel
- 90 litre National Luna fridge
- Ceiling mounted aluminium table
- Telescopic ammo box slide
- 3 x ammo boxes & stretchy straps
- 2 x kitchen units
- Drop down kitchen unit prep shelf
- Canvas cutlery bag
- Heat insulation fitted to ceiling of canopy
- 50 litre water tank and hose kit
- 3 x internal LED lights



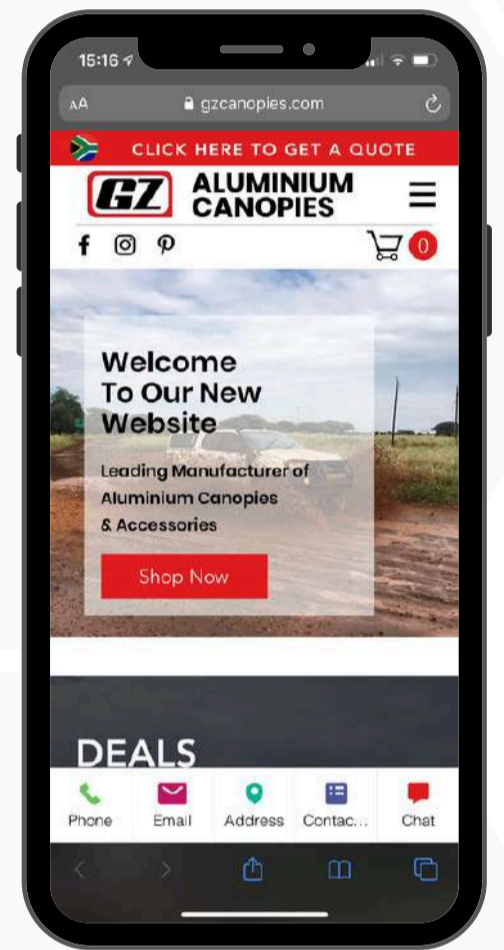


# Where to Purchase

- Direct from our factory in Wadeville, Germiston
- Buy online and we can deliver to your home or work address. All of our products are easy to fit
- From any car dealership when buying a new or used vehicle. This gives you the opportunity to add your canopy or any of our products to the finance deal
- From one of our appointed dealers listed on our website
- From your local canopy centre or 4x4 shop



Road, Sea and Air Freight Available



Shop Online

## Dealers & Distributors

To find out more about becoming a dealer or distributor please email us at [dealers@gzcanopies.co.za](mailto:dealers@gzcanopies.co.za)





# Contact Us

---

[www.gzcanopies.co.za](http://www.gzcanopies.co.za)

[info@gzcanopies.co.za](mailto:info@gzcanopies.co.za)

011 902 0217 or 060 972 0711

Unit 7, 6 Crocker Road, Wadeville 1422

## Social Media Contacts



<https://www.facebook.com/gzcanopies/>



<https://www.instagram.com/gzaluminiumcanopies/>



**ALUMINIUM  
CANOPIES**